



Santa Fe Attractions & Activities Sightseeing

Nestled in the foothills of the Rocky Mountains at 7,000 feet, Santa Fe was recently voted the fourth most popular travel destination in the U.S. and the twelfth most popular in the world. Mile after mile of scenic national forest envelops the city. Often referred to as the "City Different," the New Mexico capital is at once steeped in Spanish history and on the cutting edge of modern technology. A bustling plaza sits in the center of the city where visitors can enjoy a number of fine restaurants, trendy shops, and art galleries. Speaking of art,

Santa Fe has been voted one of America's top three art cities, thanks to the Georgia O'Keeffe Museum, Museum of New Mexico, and Museum of Fine Arts, among others. Nearby lies the Sangre de Cristos, a mountain region popular for skiing, hiking, and picnicking.

1. The Santa Fe Plaza

Whenever a visitor wants to come to Santa Fe and know where things are, most people describe their business location in relation to "The Plaza". What is the Plaza and what is its significance? The Plaza is the center of Santa Fe. It is a four sided square where you will see the Palace of the Governors on one side, which is the oldest public building in the U.S., and on the other three sides unique examples of shops, and restaurants of Santa Fe.



2. Canyon Road

Santa Fe has over 250 galleries and has been rated the second largest art market in the country - after NYC. Canyon Road is a historic pathway into the mountains and an old neighborhood that has become the city's center for art with the highest concentration of galleries.



3. Georgia O'Keeffe Museum

217 Johnson Street, Santa Fe, NM

The museum is a showcase not only for O'Keeffe's work but that of her many contemporaries. The museum is just now taking possession of over 1,000 works of the master artist from the O'Keeffe Foundation and will have new material to present for years to come.



4. Palace of the Governors Native American Vendors

105 West Palace Avenue, Santa Fe, NM

Every day, dozens of artists from around Santa Fe, New Mexico, and the Southwest sell their work under the long portal in front of the Palace of the Governors. This is a very regulated program that insures artwork is authentic and of high quality as sold by the artists or their family members. The Palace itself is the state's history museum and is the oldest public building in the U.S.



5. Cross of the Martyrs

Paseo de Peralta, between Hillside Avenue and Ortero Streets, Santa Fe, NM

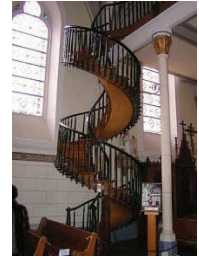
The Cross of the Martyrs, located on a small hill on the 600 block of Paseo de Peralta, serves as a reminder of the 21 Franciscan monks that were slain during the Pueblo Revolt.



6. Loretto Chapel

219 Old Santa Fe Trail, Santa Fe, NM

The Loretto Chapel is well known for its "miraculous staircase." Legend holds that a carpenter mysteriously appeared to build a staircase to the choir-loft. Amazingly, he used no nails or supports to build the corkscrew staircase and then disappeared before he could be paid. It is no longer possible for the public to climb to the loft, but taking photos of the famous structure is allowed.



7. San Miguel Mission

401 Old Santa Fe Trail, Santa Fe, NM

The San Miguel Mission, the oldest church in Santa Fe, was built in 1626 for the servants brought to Santa Fe by the Spanish. The mission was damaged during the Pueblo Revolt in 1680 and was rebuilt in 1710.



8. Santa Fe National Cemetery

501 North Guadalupe St, Santa Fe, NM

Nearly 18,000 white grave markers, recalling a small Arlington cemetery, create a moving sight against verdant hills. A visit at sunset creates a striking and unforgettable image.



9. Santuario de Guadalupe

100 South Guadalupe St, Santa Fe, NM

The Santuario de Guadalupe, built in the late 1700's, is the oldest church in the country dedicated to Our Lady of Guadalupe. The beautiful sanctuary offers an excellent example of local 18th Century architecture.



10. St. Francis Cathedral

131 Cathedral Pl, East end of San Francisco St, Santa Fe, NM

St. Francis Cathedral, built in 1869 with stone collected from local quarries, is a well-known attraction in Santa Fe. The Cathedral is home to La Conquistadore, a sacred statue of the Virgin Mary that commemorates 17th Century Spanish victories in New Mexico.



11. State Capitol Building (The Roundhouse)

Old Santa Fe Trail & Paseo de Peralta, Santa Fe, NM

The New Mexico State Capitol, located on Old Santa Fe Trail between East de Vargas and Paseo de Peralta, is sometimes referred to as the "Roundhouse" due to its circular shape. The building resembles the Zia sun symbol on the state flag. The Capitol building houses a large regional art and sculpture collection.



12. The Oldest House

215 East de Vargas Street, Santa Fe, NM

The "Oldest House" in Santa Fe dates back to approximately 1766. The house was originally built as a two story dwelling; the original second floor was removed in 1902 but was later replaced in 1926. The house is home to the remains of a Spanish warrior and a permanent display of traditional weavings.



13. New Mexico Pueblos

The nineteen Pueblo tribes that form the majority of New Mexico's Native American population are scattered around the state. A number of the communities are in close proximity to Santa Fe and offer a view into both the ancient and modern worlds of the Pueblo Indians.



14. The Railyard

The 50 acre Railyard, after years of community input and visioning, is taking shape into a multi-use property. With the revitalization of the Railyard nearly complete, existing studios, galleries, museums and community organizations are now joined by a year-round structure for the Santa Fe Farmers Market, a brand new home for teen center Warehouse 21, dynamic new retail and restaurant spaces in the new Market Station complex, live-in artist studios, and the addition of a state-of-the-art 12-screen movie theatre.



Interesting Facts:

1. Pilgrims, eat your hearts out! Santa Fe is a city of American firsts. It's the oldest colonial city in the U.S. The San Miguel Mission is the nation's oldest church, established in 1610, and the Palace of the Governors is the nation's oldest public building continually in use, built in 1619.

2. Nobody captured the spirit of New Mexico better than Georgia O'Keeffe with her paintings of bleached desert skulls, giant flowers of vivid colors and rustic landscapes. O'Keeffe began visiting the state in 1919 and spent almost the last 40 years of her life living here, dying at 98 in Santa Fe.

3. Exquisite black-on-black pottery is the trade of the San Ildefonso Pueblo located just north of Santa Fe. Artisans Maria and Julian Martinez launched a renaissance in Native American pottery in the early 1900s when they began producing black designs on polished black pots.

4. The nuns of the Loretto Chapel were dismayed when the architect of their church was killed before he could finish his work building a stairway to the choir. They prayed for help, and a mysterious carpenter showed up and built a spiral staircase without using a single nail.

5. East meets West at this unique spa in Santa Fe. Located in the hills above the city, Ten Thousand Waves is a traditional Japanese outdoor resort complete with teak hot tubs, saunas, icy cold plunges and massage therapists.

6. Santa Fe blossomed in the mid-1800s as the end of the line for the wagon train route that bore its name, the Santa Fe Trail. From the 1820s through the 1860s, traders fought off Indian attacks, disease and weather to make the 900-mile trip from Missouri to Santa Fe with their goods.

7. Santa Fe boasts more art galleries per capita than New York City. The center of the city's arts fare is Canyon Road, a street that became lined with galleries in part because it was the home for five well-known painters at the beginning of the 20th century.

8. Where are the steeples? Santa Fe's Saint Francis Cathedral was built large to tame the state's rough Wild West culture, but the twin towers are missing something. Two 160-foot-tall steeples were never added as originally planned.

9. The Santa Fe area became the center of America's most secret efforts during World War II: the building of the atomic bomb. Scientists began designing the bomb in secret facilities in nearby Los Alamos in 1943, under the codename of the Manhattan Project.

10. The adobe brick and Territorial styles of architecture are set in stone in this city. Strict local zoning laws mandate buildings be designed to fit those motifs, and high-rises are banned to ensure good views of the mountains and the night sky.

Did You Know?

Don't be surprised to see Oscar winners Jane Fonda, Gene Hackman, Alan Arkin or Shirley MacLaine around town. All four live in the area, as does former Batman Val Kilmer.

At 7,000 ft/2,170 m above sea level, Santa Fe is the highest capital city in the U.S.

The statue of a young Native American woman at the Cathedral Basilica of St. Francis of Assisi is dedicated to Blessed Kateri Tekakithwa, a Mohawk who embraced Christianity in the 18th century and who is beloved by New Mexico's Pueblo Indians, most of whom are Catholic.

The Palace of the Governors is the oldest public building in the U.S.

The 800-mi/1,300-km Santa Fe Trail ended at the Santa Fe Plaza.

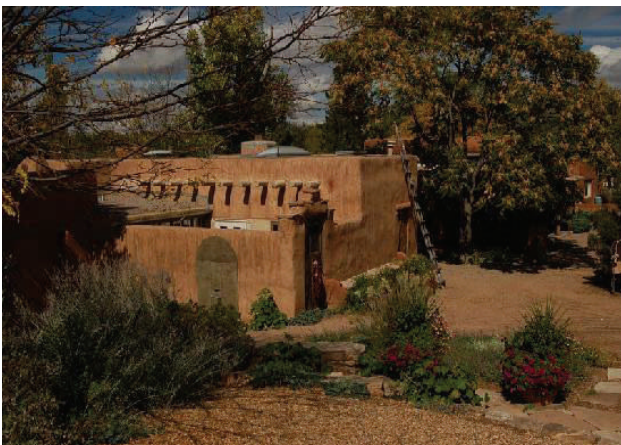
The mountains around Santa Fe are named "Sangre de Cristo," which translates into "Blood of Christ."

Santa Fe's annual Fiesta (usually the first weekend after Labor Day) bills itself as the oldest community celebration in the U.S.

Santa Fe's nickname is "The City Different."

Weather averages for Santa Fe, New Mexico												
Month	Jan	Feb	Mar	Apr	May	Jun	Jul	Aug	Sep	Oct	Nov	Dec
Record high °F (°C)	65 (18)	73 (23)	77 (25)	84 (29)	96 (36)	99 (37)	99 (37)	95 (35)	94 (34)	87 (31)	75 (24)	65 (18)
Average high °F (°C)	43 (6)	49 (9)	56 (13)	64 (18)	73 (23)	83 (28)	86 (30)	83 (28)	77 (25)	66 (19)	52 (11)	44 (7)
Average low °F (°C)	15 (-9)	21 (-6)	26 (-3)	32 (0)	40 (4)	49 (9)	54 (12)	53 (12)	46 (8)	35 (2)	24 (-4)	16 (-9)
Record low °F (°C)	-14 (-26)	-10 (-23)	-6 (-21)	10 (-12)	23 (-5)	33 (1)	38 (3)	36 (2)	26 (-3)	5 (-15)	-12 (-24)	-17 (-27)
<u>Precipitation</u> inches (mm)	0.60 (15.2)	0.50 (12.7)	0.84 (21.3)	0.72 (18.3)	1.27 (32.3)	1.24 (31.5)	2.25 (57.2)	2.13 (54.1)	1.67 (42.4)	1.30 (33)	1.05 (26.7)	0.65 (16.5)

Source: weather.com



Santa Fe is a modest-sized city, and most of its attractions are quite close together. Many of the city's better restaurants, shops and sights are located downtown, within a few blocks of the historic Plaza—the heart of Santa Fe.

Another prime district for visitors is Canyon Road, just southeast of downtown (within walking distance), where many of the art galleries are located.

Several of the city's best museums are on Museum Hill, which is south of Canyon Road. Many hotels and other businesses are located along Cerrillos Road, which runs southwest out of Downtown and has been a focal point for the city's growth in recent decades.